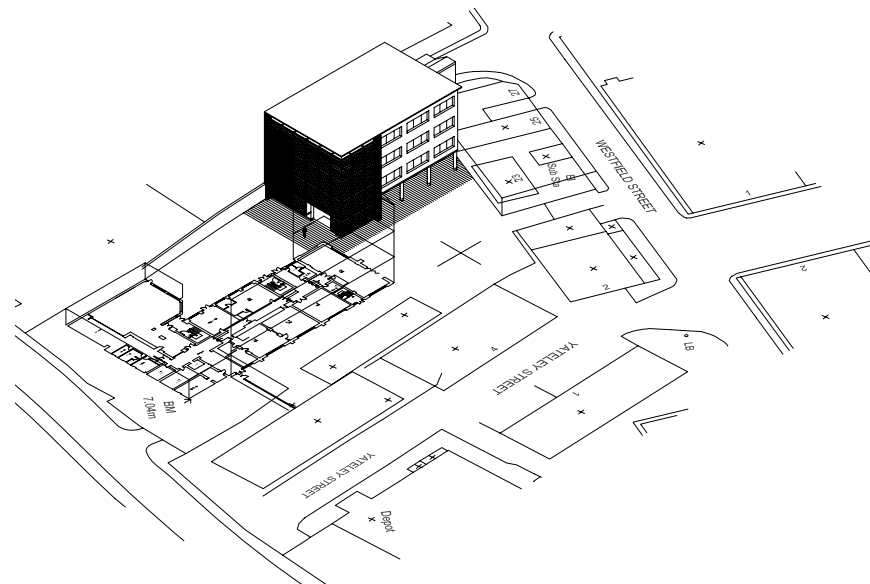


Projekty W Wielkiej Brytanii | UK Projects



Holborn College Learning Resource Centre Woolwich Road London SE7

Klient
Rozmiar
Wartość

Holborn College
1,700m²
£2 million

Projekt rozbudowy College'u w Holborn. Nowy budynek Centrum Badań IT ma powierzchnię 1,700m².

Client
Size
Value

Holborn College
1,700m²
£2 million

A current project to provide a 1,700m² extension to Holborn College's Woolwich site. The new building will comprise a learning resource centre, library and IT suite, together with associated welfare and break-out facilities.